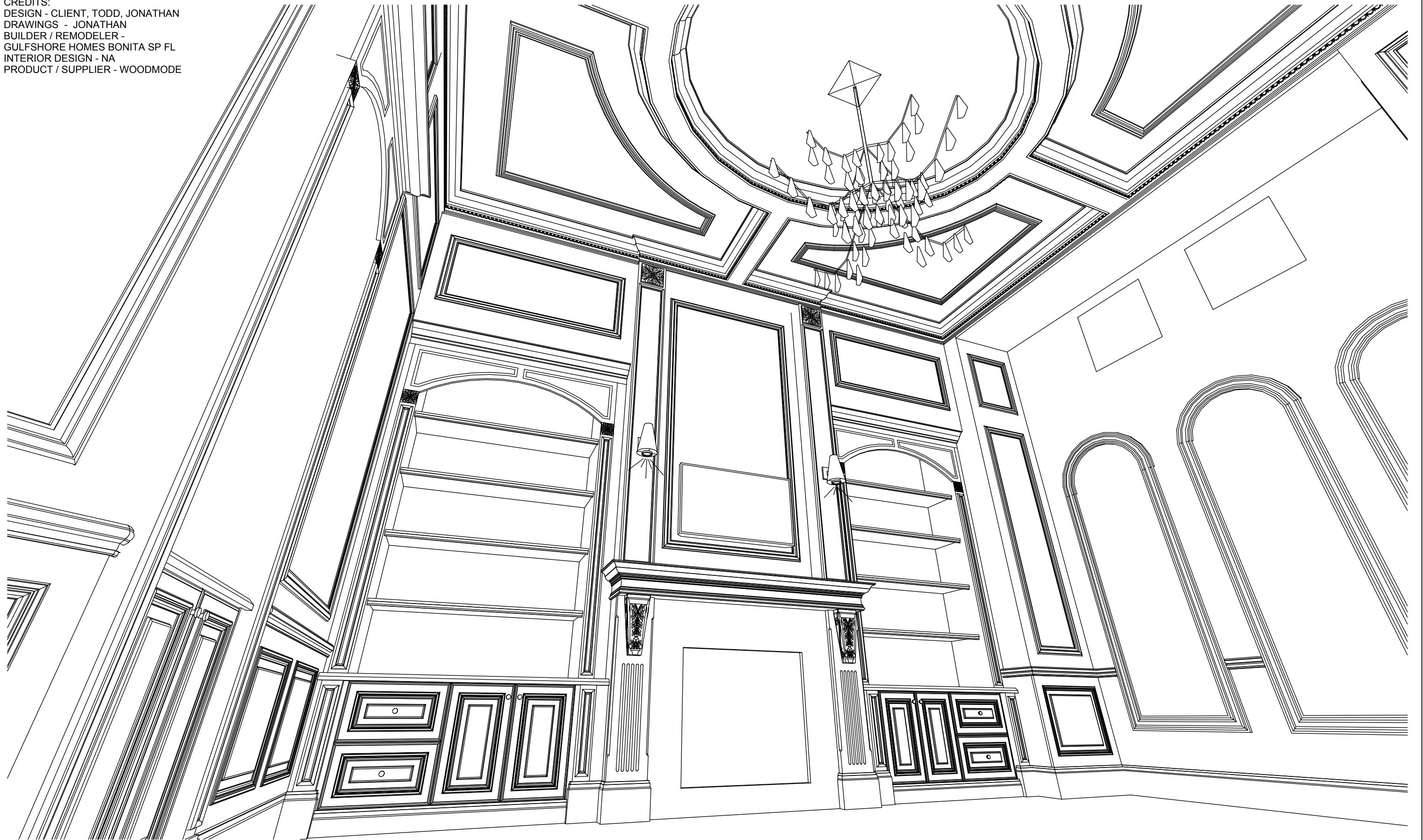


CREDITS:
 DESIGN - CLIENT, TODD, JONATHAN
 DRAWINGS - JONATHAN
 BUILDER / REMODELER -
 GULFSHORE HOMES BONITA SP FL
 INTERIOR DESIGN - NA
 PRODUCT / SUPPLIER - WOODMODE



NOTE:
ELECTRICAL, LIGHTING, DATA
& FIREPLACE BY OTHERS

LARGE 10"
COLUMNS WITH
FULL DOOR
PROFILE
W/ INSIDE BEAD
AND
APP ESPERANTO
MLDG
COLUMN DOES
NOT INCLUDING
CENTER RAISED
PANEL

4" COLUMNS TO
FEATURE
APPLIED
ESPERANTO MLDG

APPLIED WM
MCM8 MOLDING
ON PAINTED
WALL

MCR8312
W/RISER

AFE
ROS-AS2

ALL SHELVES
W/
BARCELONA
DOOR EDGE &
LED STRIPS
FACING BACK

APPLIED
WM MCM8
MOLDING ON
PAINTED WALL

ELEC DROPS
FOR LIGHTING
BY OTHERS

WM MCM8
CHAIR RAIL

WAINSCOT
PANELING

ALL FLOORING, TILE,
ELECTRICAL, LIGHTING, MIRRORS, FRAMING,
DRYWALL, APPLIANCES, PLUMBING & FIXTURES
BY OTHERS

FILE
DRAWERS

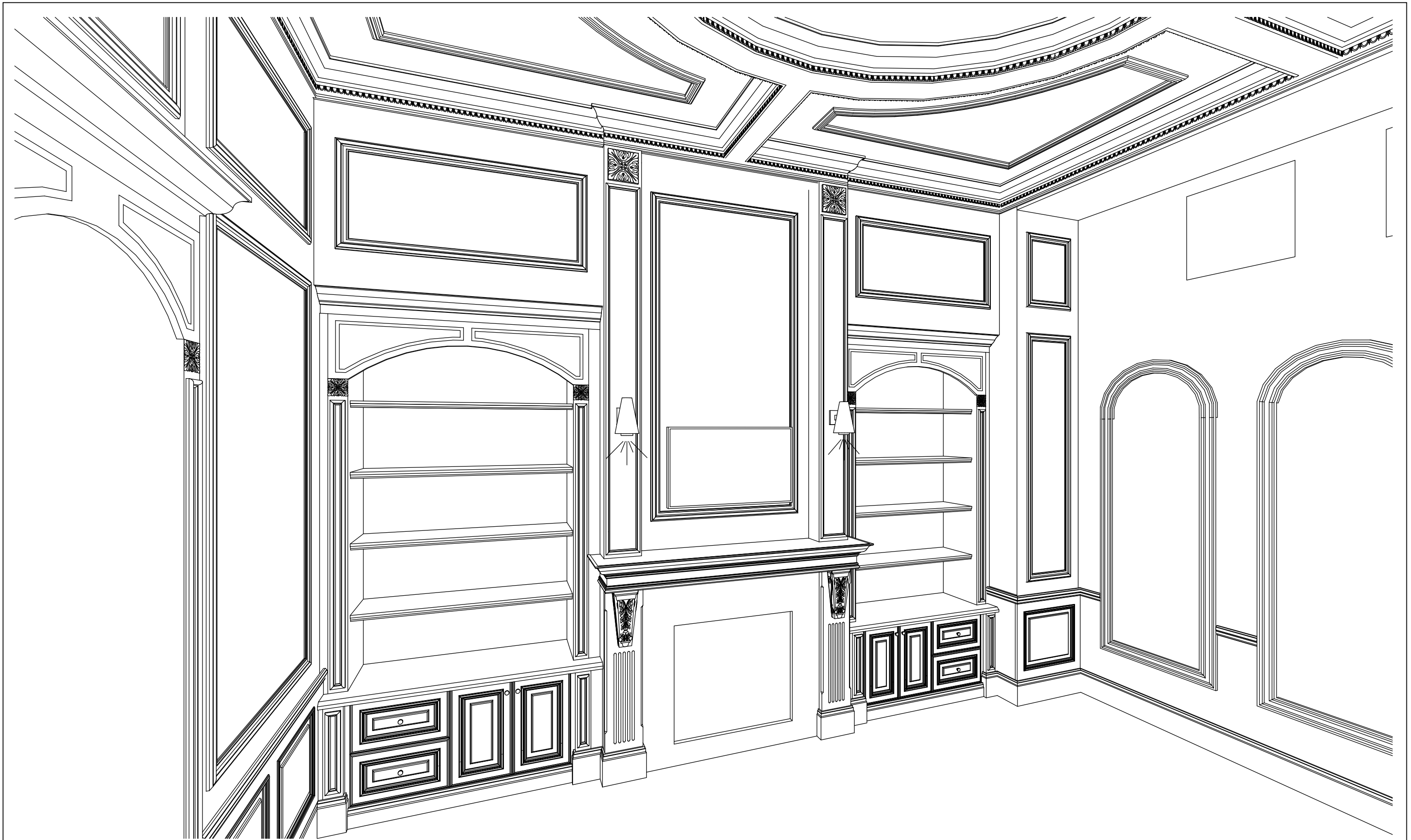
FIREBOX OPENING:
36" W x 32" H
STONE SURROUND
BY OTHERS

FILE
DRAWERS

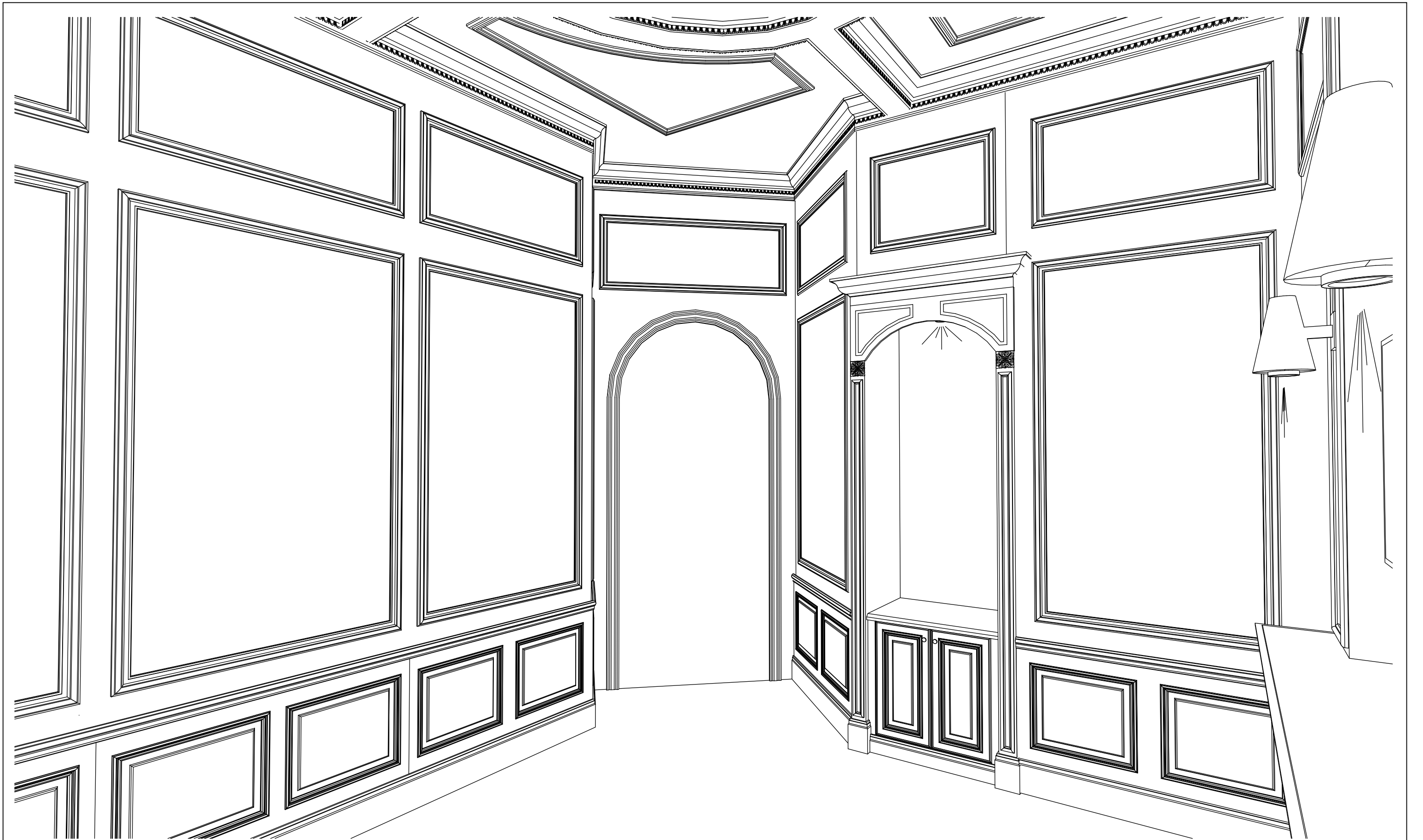
GRAND TOUR RAISED PANEL
FIRESIDE W/ BLACK GLAZE
ON CHERRY

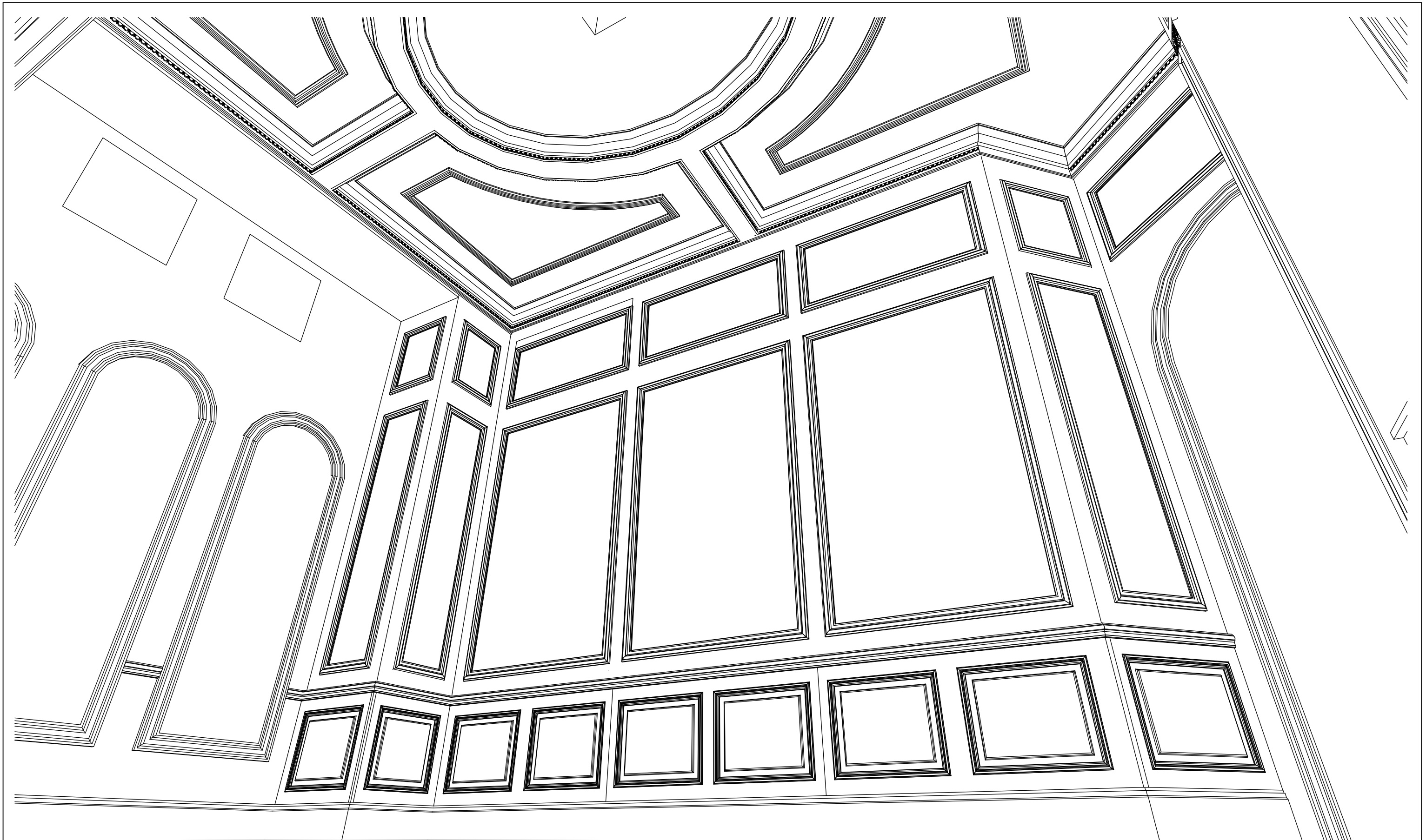
ELEVATION
scale: 1/2"

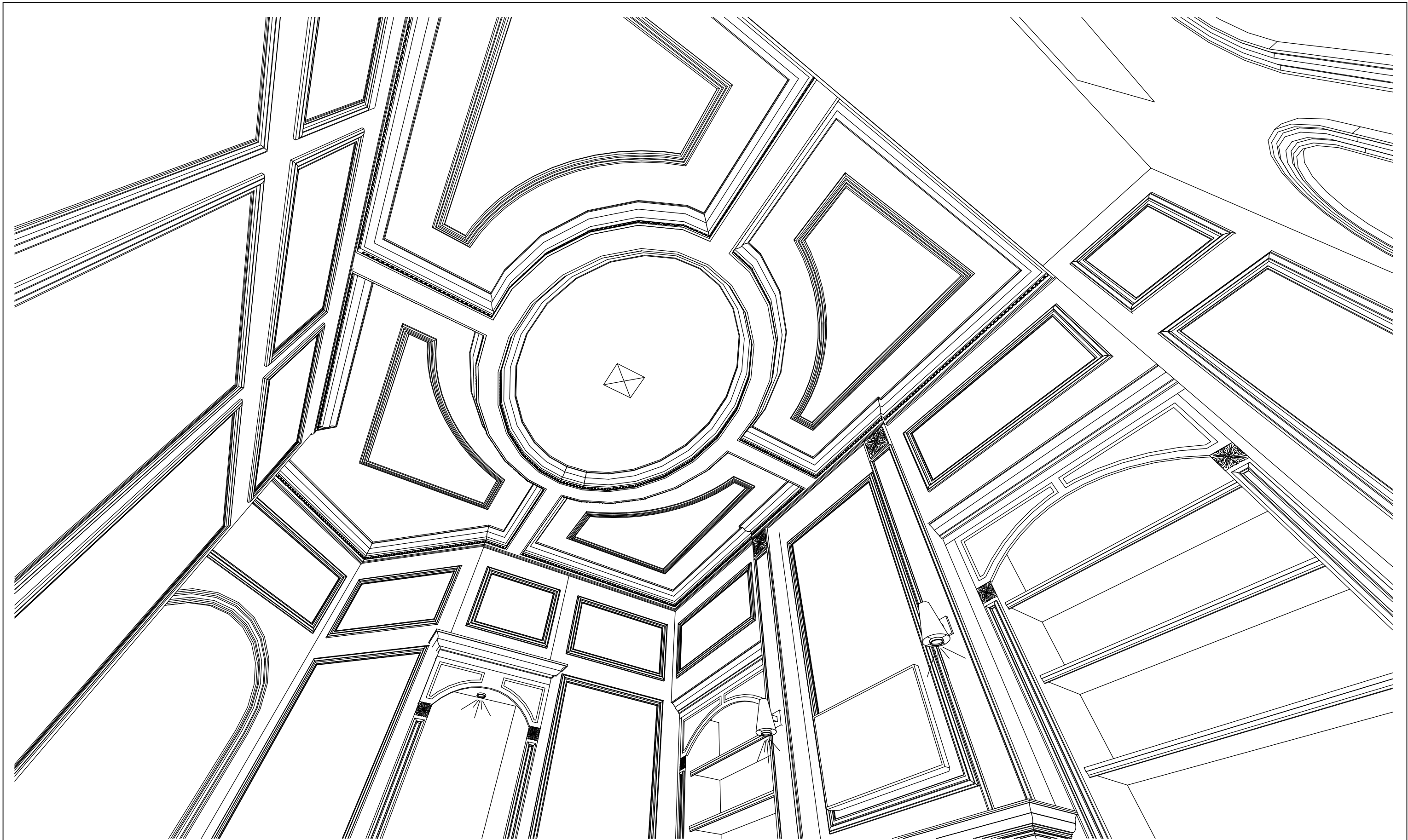


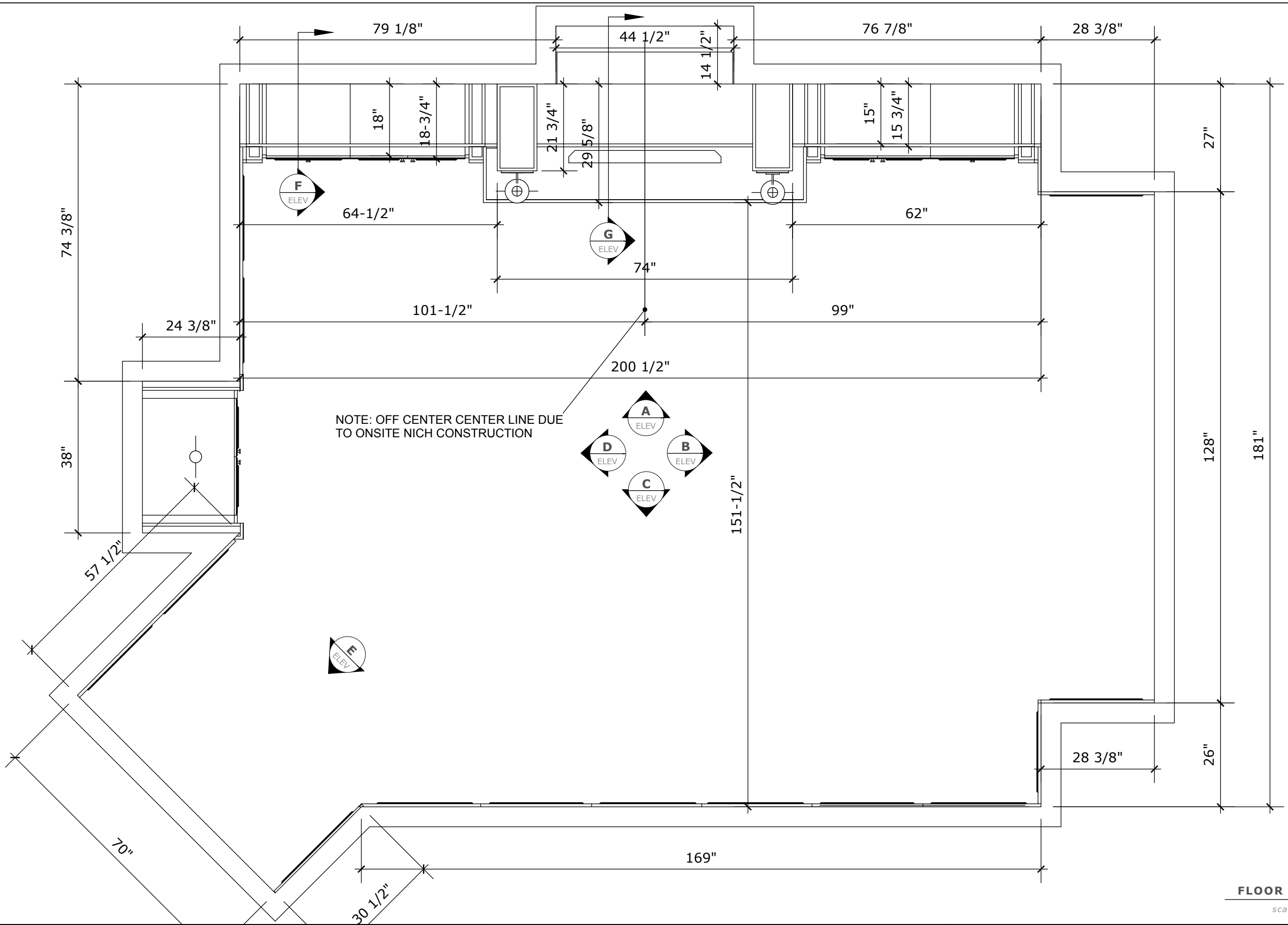


1	12/07/2014	REVS	
2	01/11/2015	CURRENT	



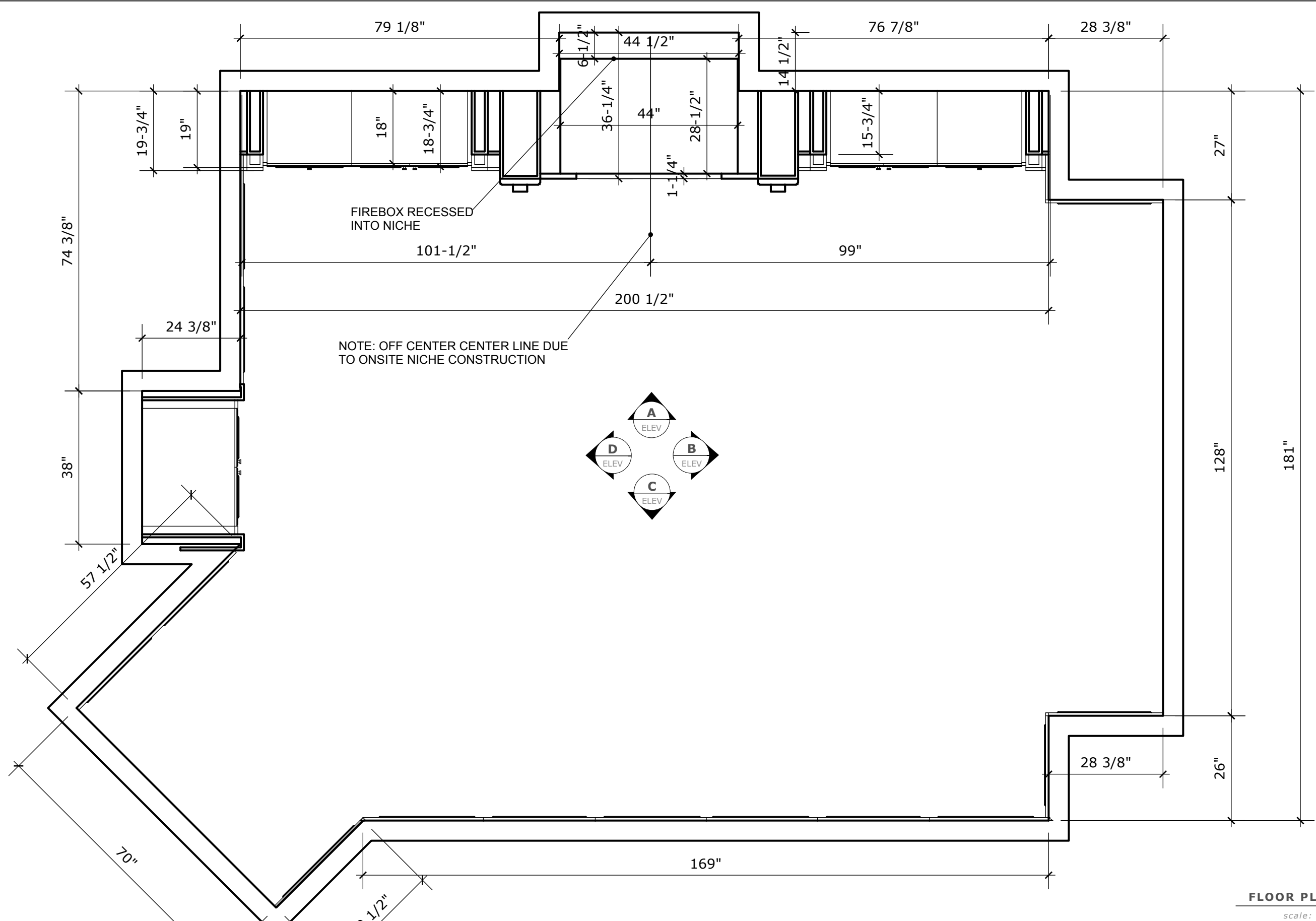






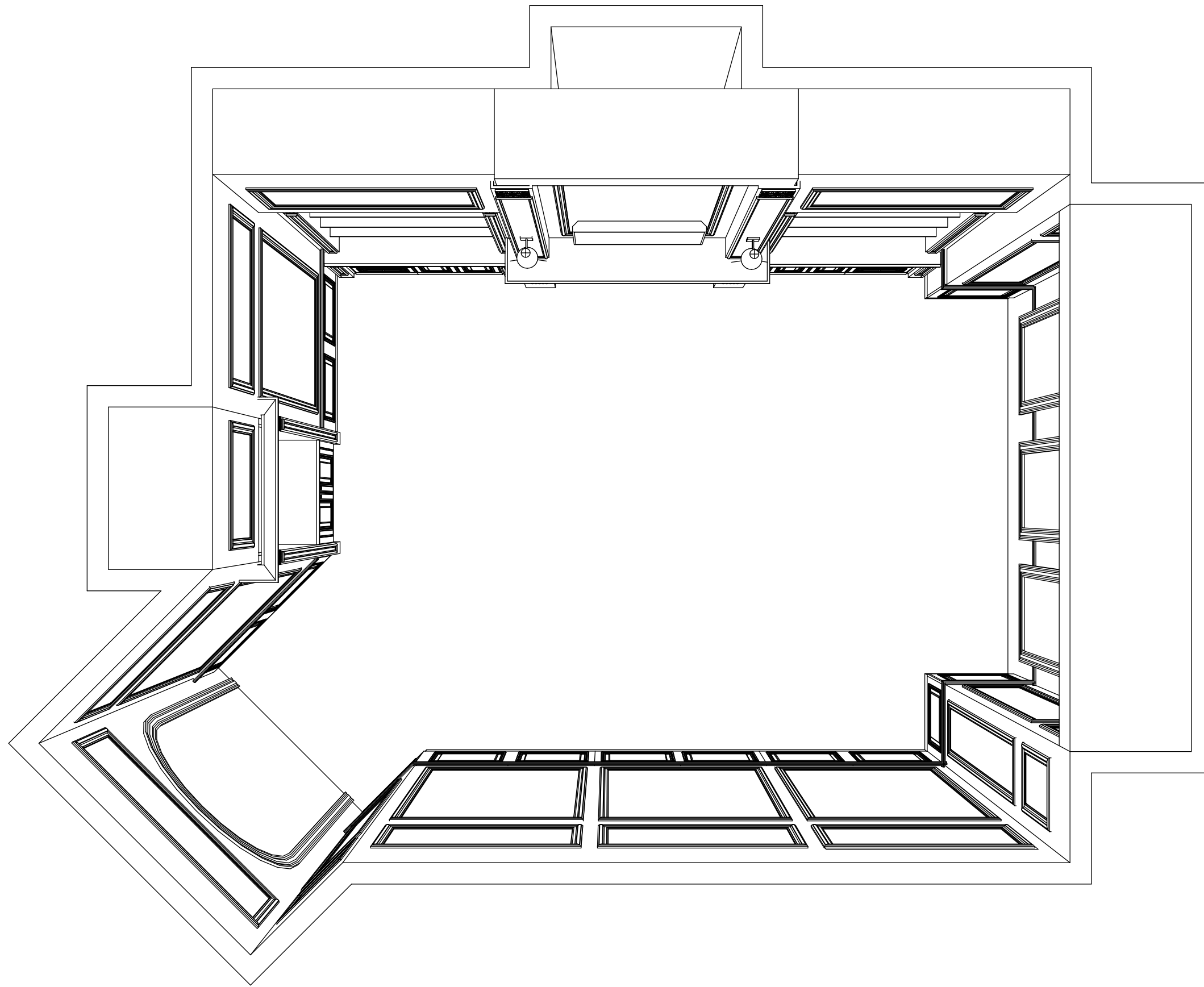
NOTE: OFF CENTER CENTER LINE DUE TO ONSITE NICH CONSTRUCTION

FLOOR PLAN
scale: 1/2"

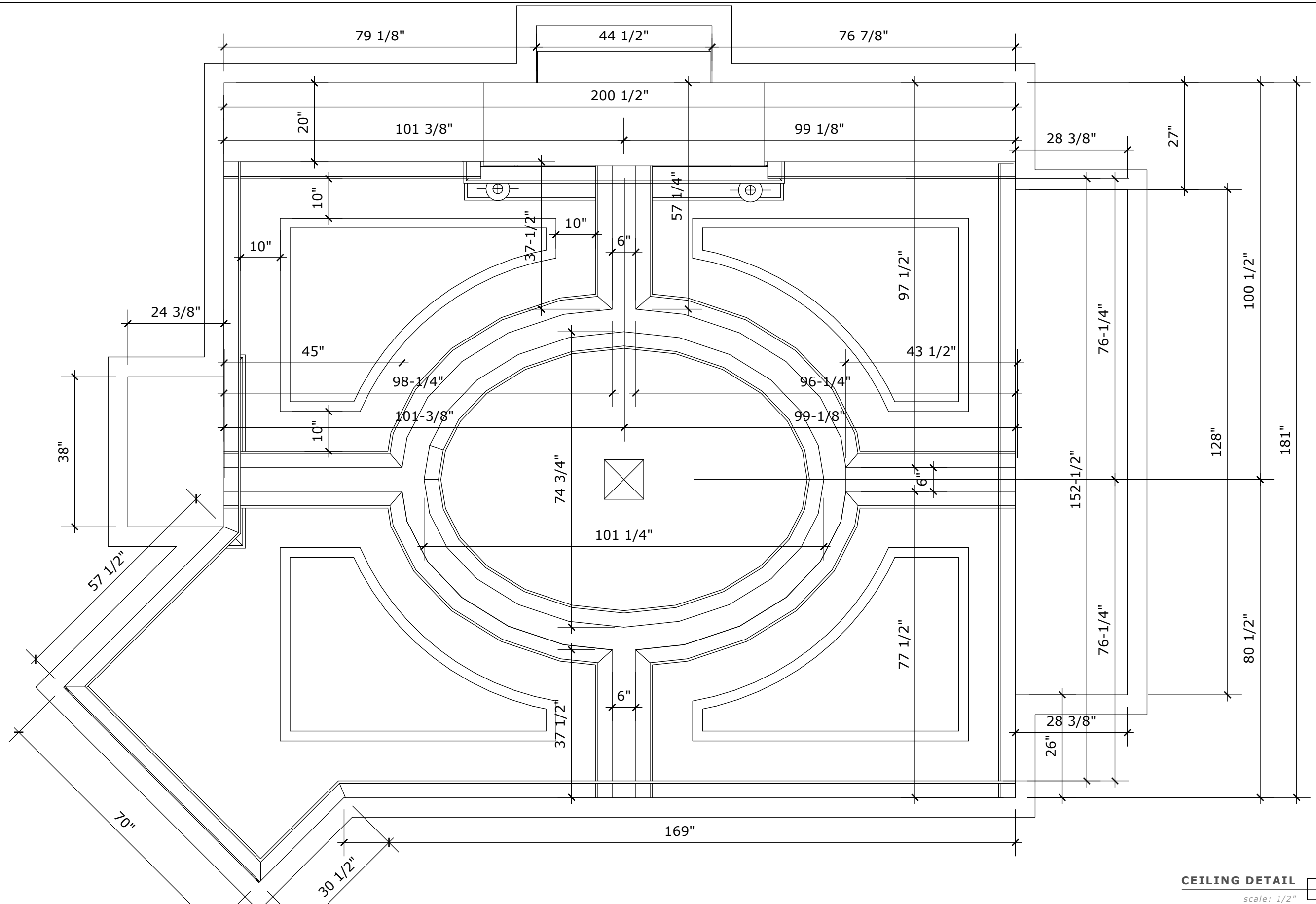


FLOOR PLAN
 scale: 1/2" 

1	12/07/2014	REVS	
2	01/11/2015	CURRENT	

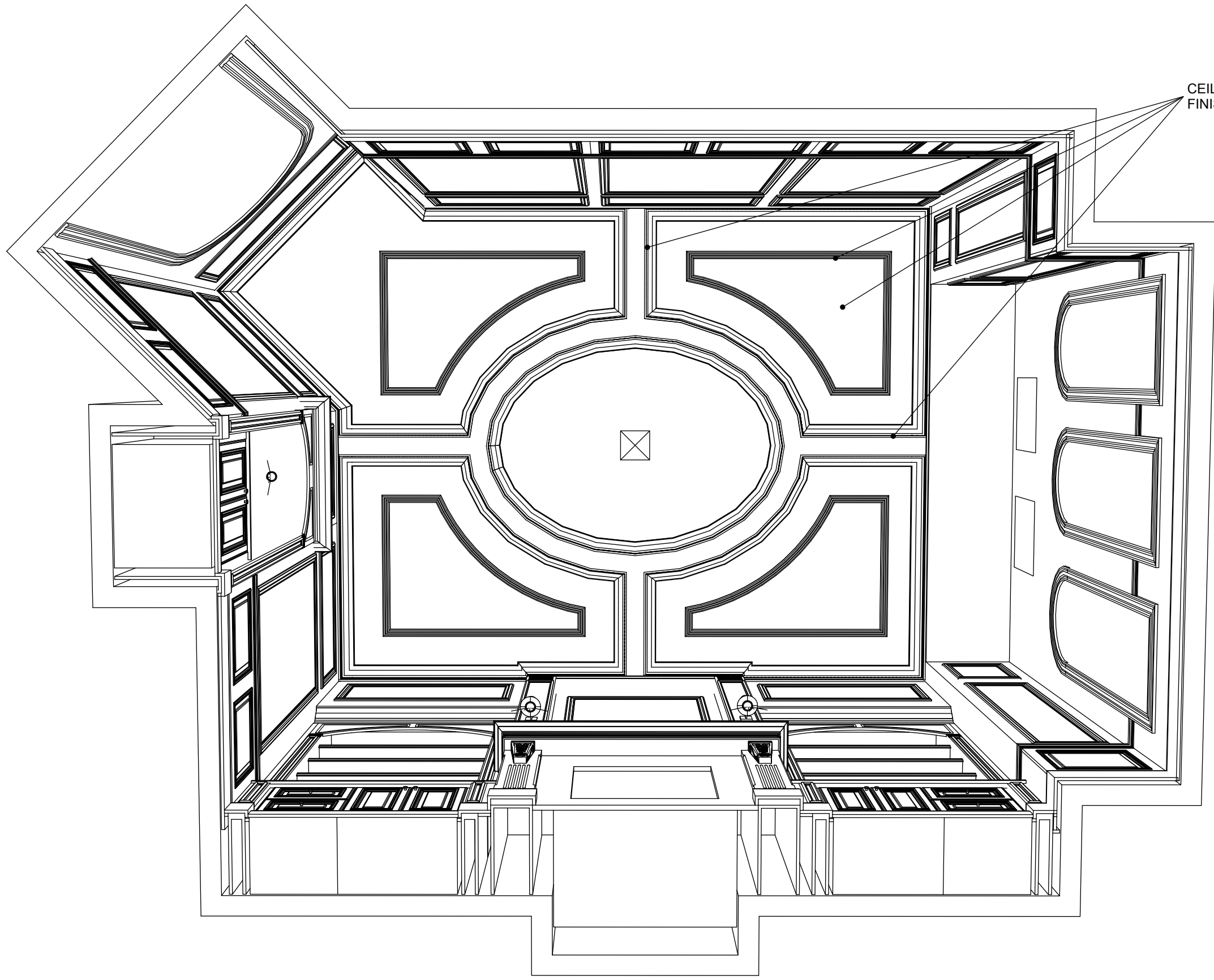


FLOOR PLAN 
scale: nts



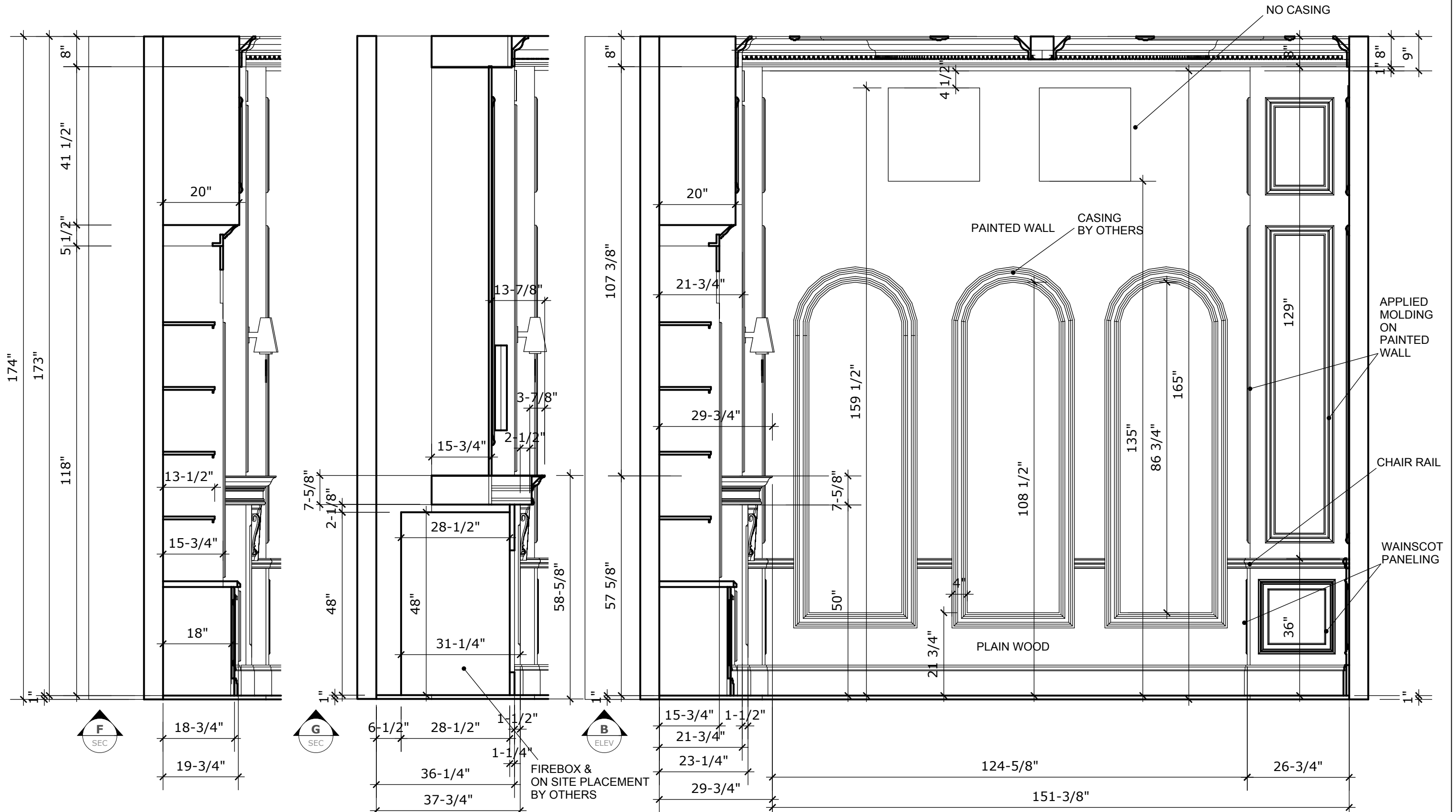
CEILING DETAIL
 scale: 1/2" 

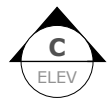
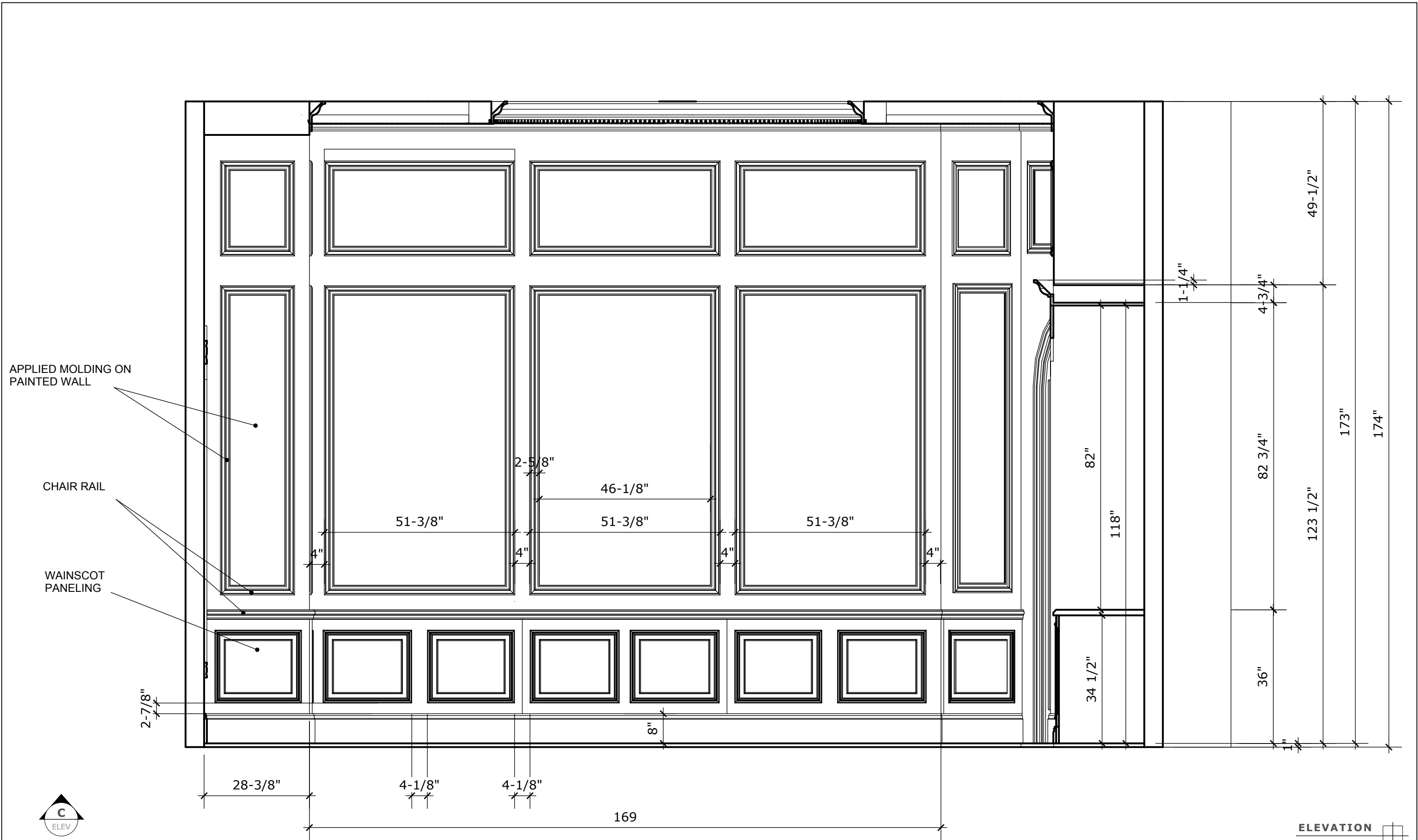
NO.	DATE	REVISIONS
1	12/07/2014	REVS
2	01/11/2015	CURRENT



CEILING BEAMS, MOULDING &
FINISH BY OTHERS

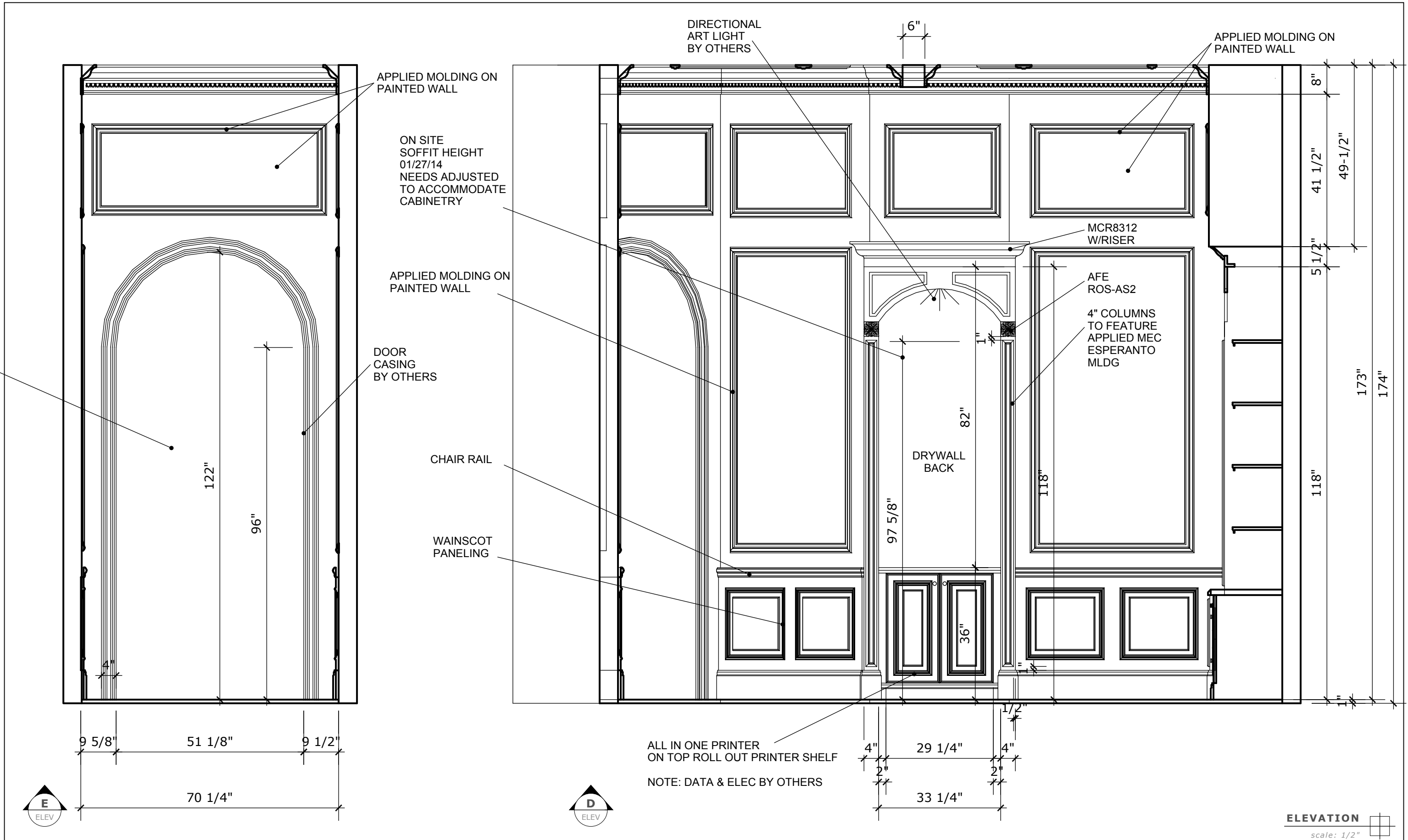
CEILING DETAIL 
scale: nts





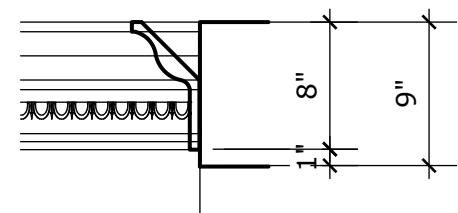
ELEVATION
scale: 1/2"

NO.	DATE	REVISIONS
1	12/07/2014	REVS
2	01/11/2015	CURRENT

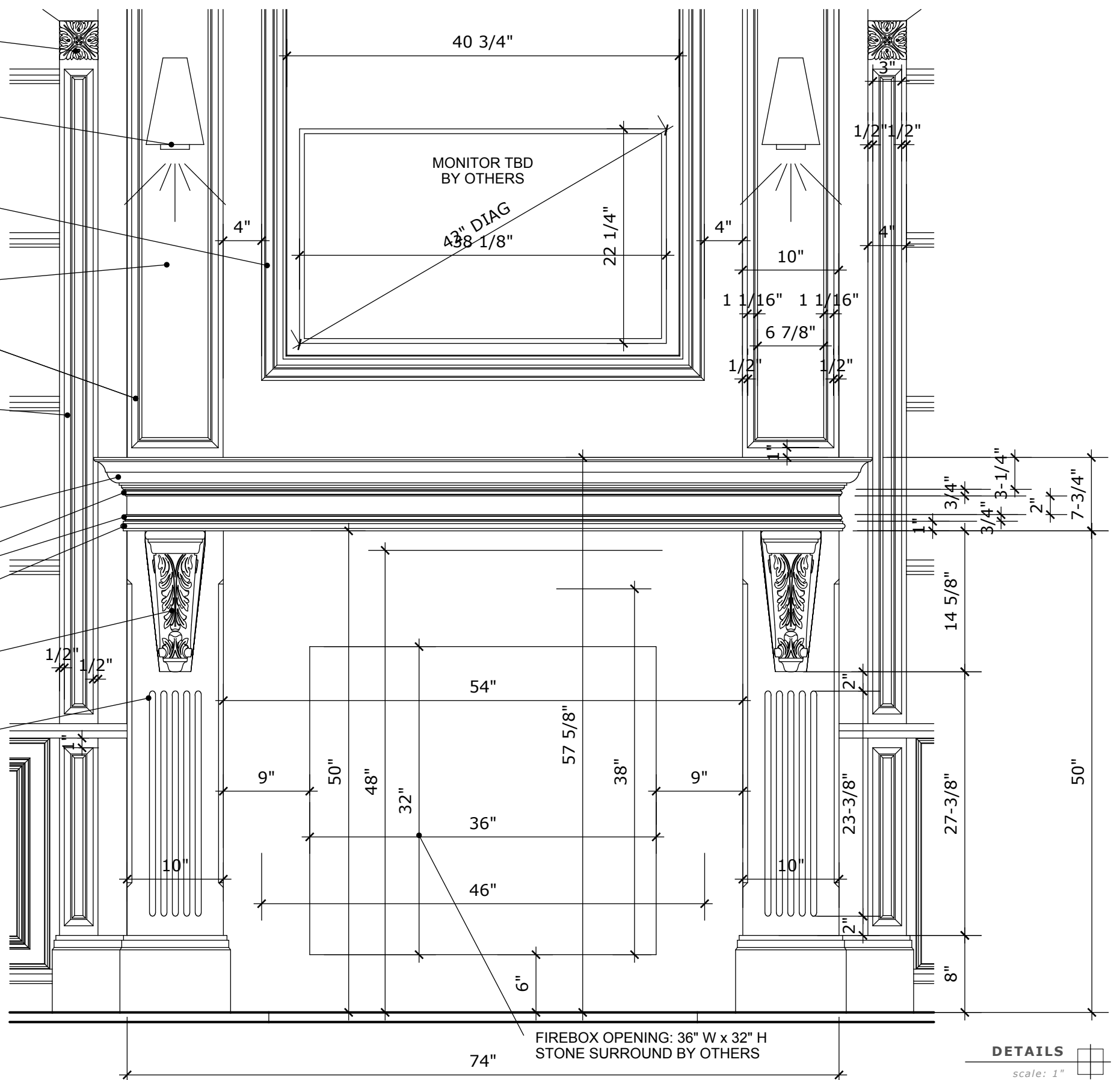


- AFE ROS-AS2
- SCONCE & LIGHTING TBDBY OTHERS
- WM MCM8 CHAIR RAIL
- LARGE 10" COLUMNS WITH FULL DOOR PROFILE W/ INSIDE BEAD AND APP MEC ESPERANTO MLDG
- NOT INCLUDING: CENTER RAISED PANEL
- 4" COLUMNS TO FEATURE APPLIED MEC ESPERANTO MLDG

- MCR 8351
- MBC BARCELONA MLDG
- ENGLISH PILASTER STRIP
- ENK CBL-AP2 6.25" W X 14-5/8" H X 2.5"D
- FLUTED COLUMN W/ LAMBS TONGUE DETAIL



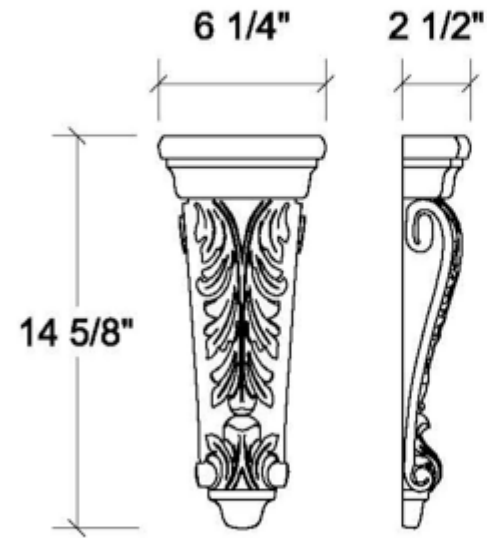
CROWN W/ INVERTED FURNITURE BASE W/ DENTAL & ROUTED EDGE ALL BY OTHERS



FIREBOX OPENING: 36" W x 32" H
STONE SURROUND BY OTHERS

DETAILS
scale: 1" = 1'

CBL-AP2 Corbel Acanthus Pilaster Medium
6-1/4" W. x 2-1/2" D. x 14-5/8" H.
(1:8 Scale)



ROS-AS

ROS-AS4
 (Download 2D PDF Drawing)
 (Download 2D CAD Drawing)



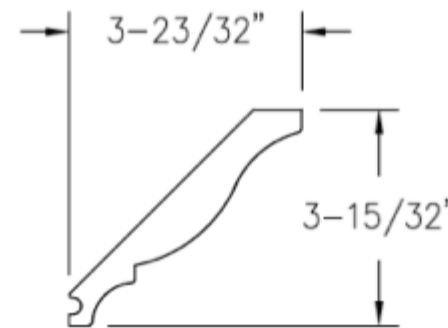
Size: 8" x 8" x 3/4"

ROS-AS2
 (Download 2D PDF Drawing)
 (Download 2D CAD Drawing)



Size: 4" x 4" x 5/8"

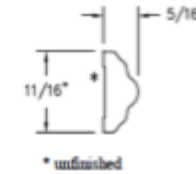
3-1/2" CROWN MOULDING:



MCR 8312

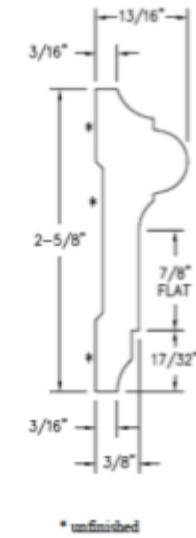
	Mouldings & Trim Product Information		A-1
--	---	--	-----

Barcelona Cover Moulding - MBC



	Mouldings & Trim Product Information		A-13
--	---	--	------

Chair Rail, 2-5/8" - MCM



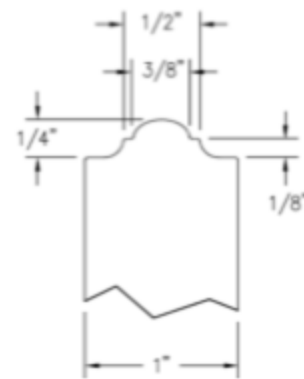
© Enkeboll Designs 1996-2007

PILASTER STRIPS, ENGLISH CO

- Solid wood, finished all around.
- 1" thick; available 2-1/8" or 6" deep.

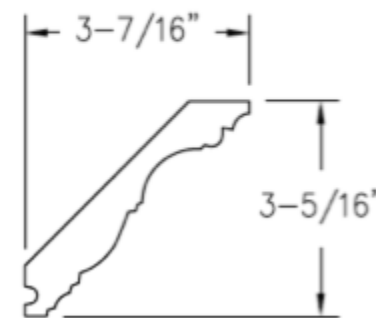


Pilaster Panel Profiles, English Country



ENGLISH COUNTRY PROFILE

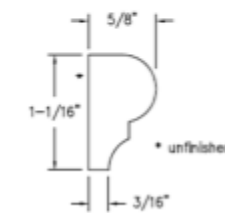
3-5/16" CROWN MOULDING:



MCR 8351

A-42		Mouldings & Trim Product Information	
------	--	---	--

Esperanto Cover Moulding - MEC



MEC

DETAILS
 scale: nts